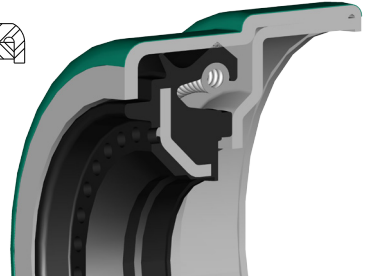
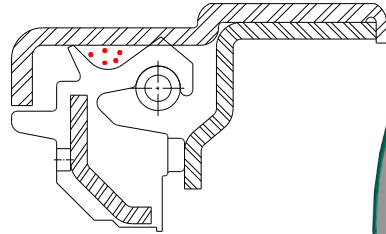




NAK Standard Type

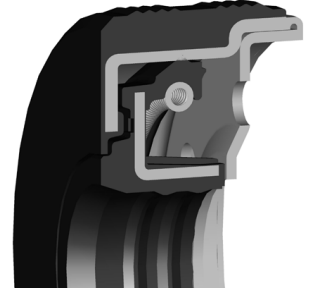
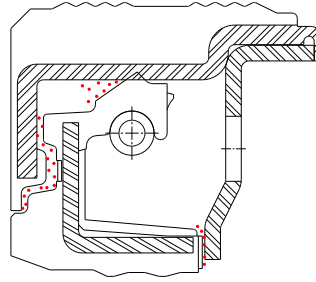
ST1



Shaft	Size		Measure mm / inch	Drawing No.
	Bore	Width		
3.250	4.501	0.672	inch	RD015
3.500	4.842	0.904	inch	49763
3.625	4.813	0.906	inch	RD018
3.875	5.501	0.938	inch	47298
3.875	5.691	0.938	inch	49778
3.938	5.501	0.938	inch	47296
4.000	5.754	1.079	inch	49762
4.250	5.501	0.938	inch	RD014
4.250	6.009	0.984	inch	49790
4.250	6.254	1.250	inch	49781
4.250	6.256	1.375	inch	43468
4.370	6.000	1.063	inch	47094
4.500	5.876	0.984	inch	49779
4.625	6.001	1.063	inch	RD013
4.766	6.006	1.063	inch	54914
4.766	6.311	1.125	inch	RD010
4.767	6.316	1.125	inch	49791
4.625	6.001	1.063	inch	RD013

NAK Standard Type

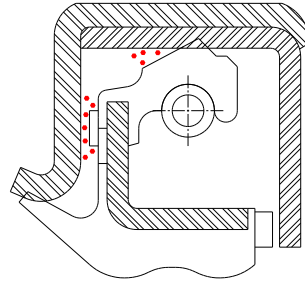
ST5



Shaft	Size		Measure mm / inch	Drawing No.
	Bore	Width		
4.375	5.751	0.995	inch	49812
88.90	122.96	23.34	mm	RD047
98.43	144.53	23.55	mm	RD053
101.60	146.15	27.13	mm	RD052
107.95	152.60	24.74	mm	RD050
107.95	158.75	31.50	mm	RD055
111.13	149.99	25.15	mm	RD051
114.30	146.05	25.56	mm	RD048
114.30	149.23	24.74	mm	RD054
115.00	156.00	24.00	mm	59491
117.48	152.40	25.15	mm	RD040
121.08	160.32	28.32	mm	RD049
150.00	180.00	28.00	mm	55071

NAK Standard Type

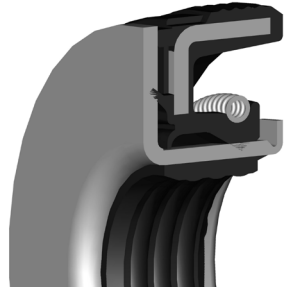
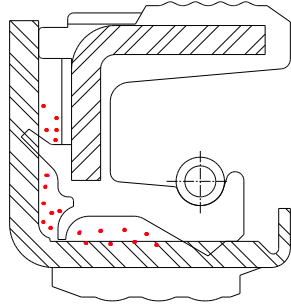
ST6



Shaft	Size		Measure mm / inch	Drawing No.
	Bore	Width		
60.00	82.00	12.00	mm	44919
65.00	90.00	13.00	mm	44634
70.00	95.00	13.00	mm	44920
120.00	160.00	17.00	mm	62708
125.00	160.00	17.00	mm	61808
149.90	176.00	16.00	mm	15479
150.00	180.00	14.50/17.00	mm	43518
158.00	188.00	16.00	mm	33003
160.00	196.00	17.00	mm	44246

NAK Standard Type

ST10

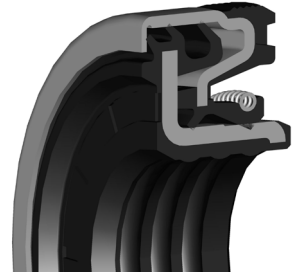
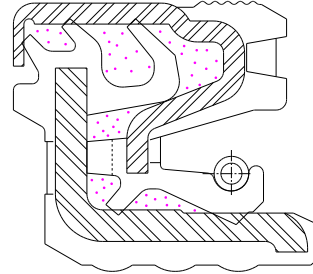


Shaft	Size		Measure mm / inch	Drawing No.
	Bore	Width		
3.438	4.575	0.700	inch	24157
3.500	4.842	0.903	inch	10982
4.250	6.000	1.000	inch	44933
4.767	6.308	1.035	inch	51470
140.00	165.00	15.00	mm	63848
140.00	170.00	14.50	mm	58426
155.00	175.00	15.00	mm	53269
155.00	180.00	15.00	mm	45723



NAK Standard Type

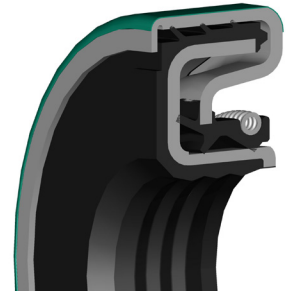
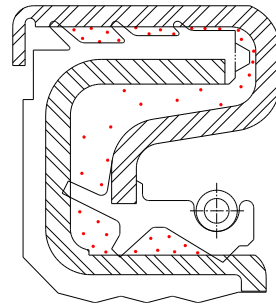
ST16



Shaft	Size		Measure mm / inch	Drawing No.
	Bore	Width		
45.00	70.00	14.00/17.00	mm	32552
56.00	80.00	13.00/14.50	mm	42142
60.00	90.00	13.50/15.00	mm	43562
65.00	105.00	13.00/14.50	mm	49397
66.15	91.00	12.50/14.00	mm	47671
75.00	100.00	13.00/14.50	mm	43563
85.00	110.00	13.00/14.50	mm	45776
85.00	110.00	14.50/17.00	mm	54869
95.00	120.00	13.00/14.50	mm	58261
95.00	130.00	13.00/14.00	mm	61769
110.00	140.00	14.00/16.50	mm	32137
110.00	140.00	14.50/16.00	mm	42015
127.00	160.00	15.50/17.00	mm	37323
130.00	165.00	14.50/16.00	mm	47934
140.00	170.00	14.50/16.00	mm	42014
150.00	180.00	14.50/16.00	mm	28704
150.15	178.00	13.00/16.00	mm	42550
155.00	190.00	14.50/16.00	mm	62320
170.00	200.00	15.00/16.00	mm	45751
190.00	220.00	16.00/18.00	mm	38600

NAK Standard Type

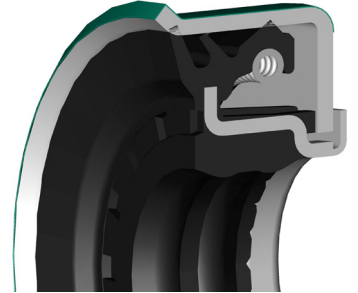
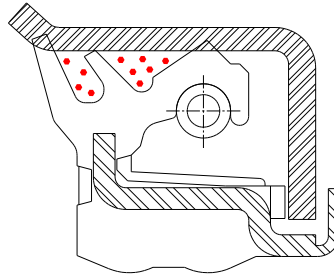
ST19



Size		Width	Measure mm / inch	Drawing No.
Shaft	Bore			
90.00	120.00	13.00	mm	36724
136.80	165.00	13.00	mm	16459

NAK Standard Type

ST26

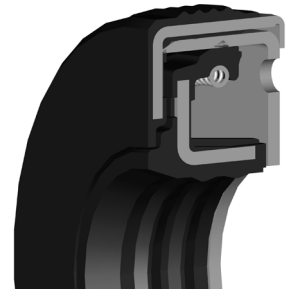
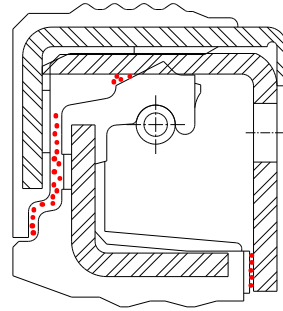


Shaft	Size		Measure mm / inch	Drawing No.
	Bore	Width		
120.00	160.00	15.50/20.00	mm	44903
125.00	160.00	15.50/20.00	mm	44961
130.00	170.00	17.00/18.50	mm	54518
130.00	170.00	18.00/20.00	mm	41796
135.00	170.00	18.00/20.00	mm	54513
150.00	176.00	14.50/19.50	mm	59856



NAK Standard Type

ST34

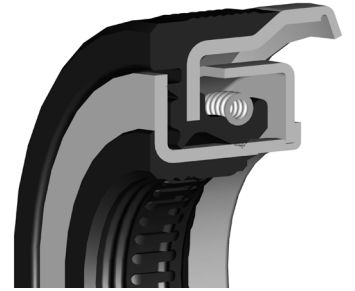
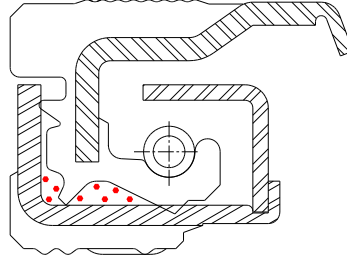


Shaft	Size		Measure mm / inch	Drawing No.
	Bore	Width		
60.00	90.00	14.00	mm	50382
121.08	160.25	16.00	mm	50592
135.00	170.00	16.00	mm	48414



NAK Standard Type

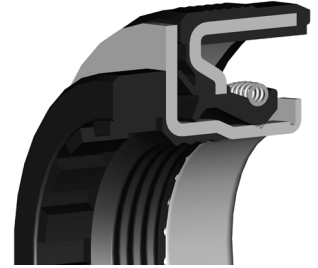
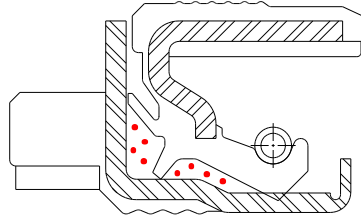
ST35



Shaft	Size		Measure mm / inch	Drawing No.
	Bore	Width		
2.875	3.875	0.700	inch	63975
3.500	4.842	0.925	inch	40357
3.875	5.690	0.875	inch	40335
3.937	5.372	1.015	inch	48393
4.625	5.999	0.840	inch	40356
4.765	6.311	1.078	inch	40355

NAK Standard Type

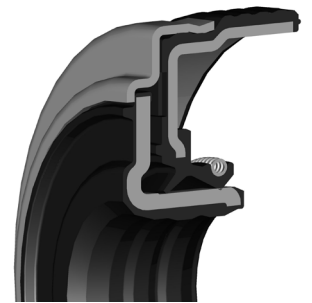
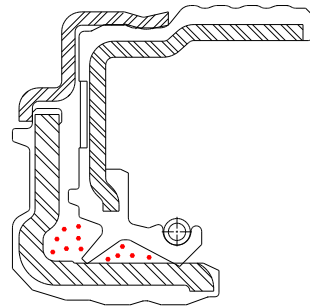
ST37



Shaft	Size		Measure mm / inch	Drawing No.
	Bore	Width		
84.93	104.77	18.26	mm	41712
85.00	105.00	17.50	mm	52405
85.00	105.00	18.00	mm	34205

NAK Standard Type

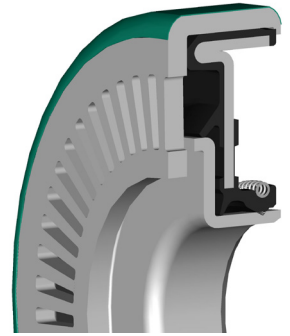
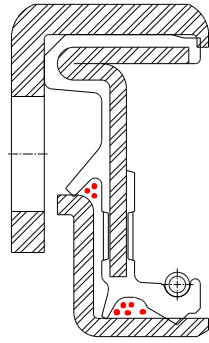
ST40



Size		Width	Measure mm / inch	Drawing No.
Shaft	Bore			
72.50	108.00	18.80	mm	43729
80.35	113.00	24.30	mm	57898
81.90	125.90	22.50	mm	57542

NAK Standard Type

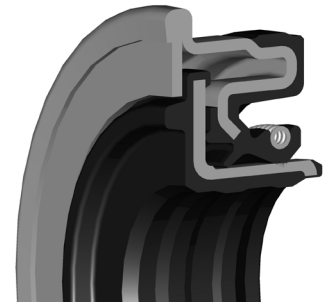
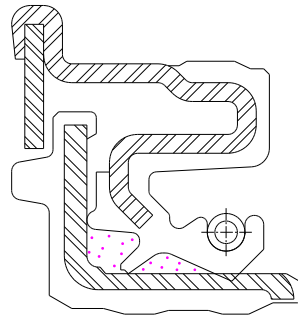
ST44



Size		Width	Measure mm / inch	Drawing No.
Shaft	Bore			
132.00	172.00	12.00	mm	44923

NAK Standard Type

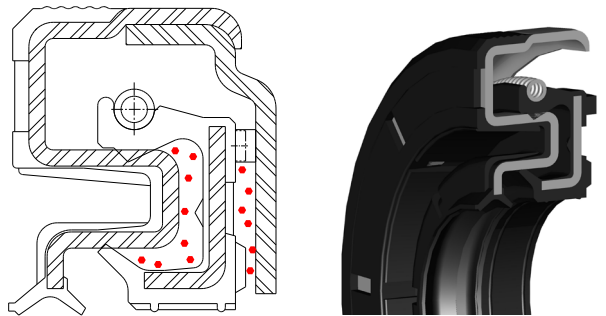
ST47



Size		Width	Measure	Drawing No.
Shaft	Bore		mm / inch	
72.50	98.50/106.00	11.00/15.00	mm	44989
72.50	99.90/107.00	11.00/15.70	mm	53195
75.20	101.50/107.70	11.00/15.50	mm	56548

NAK Standard Type

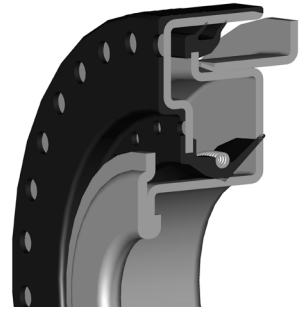
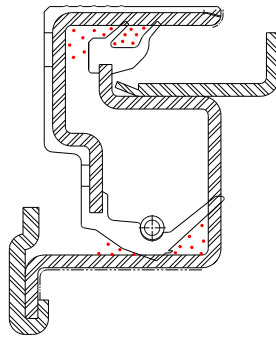
ST48



Size		Width	Measure mm / inch	Drawing No.
Shaft	Bore			
31.70	61.00	11.30/13.00	mm	63922
40.00	69.00	12.00/15.00	mm	46378
40.00	69.00	13.50/15.50	mm	44985

NAK Standard Type

ST62

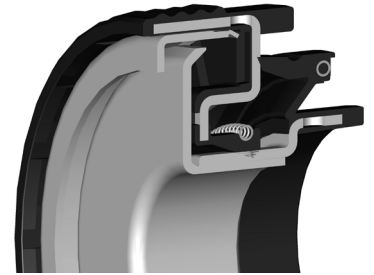
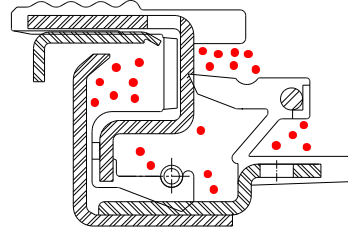


Size			Measure	Drawing No.
Shaft	Bore	Width	mm / inch	
89.50	138.70	25.50	mm	48345



NAK Standard Type

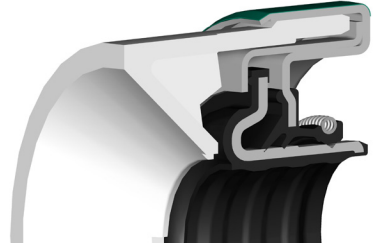
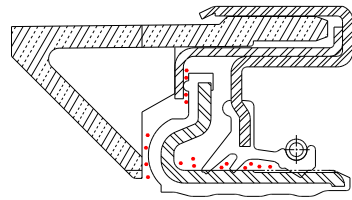
ST73



Shaft	Size		Measure	Drawing No.
	Bore	Width	mm / inch	
73.00	113.00	30.50	mm	61166

NAK Standard Type

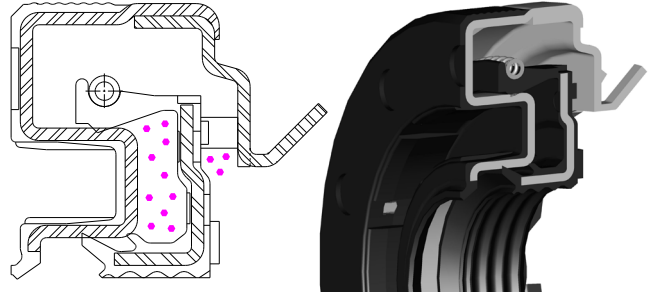
ST81



Size		Measure			Drawing No.
Shaft	Bore	Width	mm / inch		
36.90	72.20	32.20	mm		57337

NAK Standard Type

ST96



Shaft	Size		Measure mm / inch	Drawing No.
	Bore	Width		
40.00	75.00	13.50/20.50	mm	58806